

## 1850 Float Nose

### Application

The WellMark Float Nose is an inexpensive mechanical lever control that provides convenient vessel access. The 7" x 12" float provides sufficient lift torque to operate WellMark's near-balanced 1250 Series lever valve as well as other industry balanced valves. The float nose is widely used as an oil or water dump control on separators, water knockouts, horizontal emulsion treaters, and other similar accumulators.



### Features

- 500 psi Working Pressure, Std.
- Cast Steel Float Nose, Std.
- Cast Steel Hammer Union Ring, Std.
- ACME Thread for Long Wear

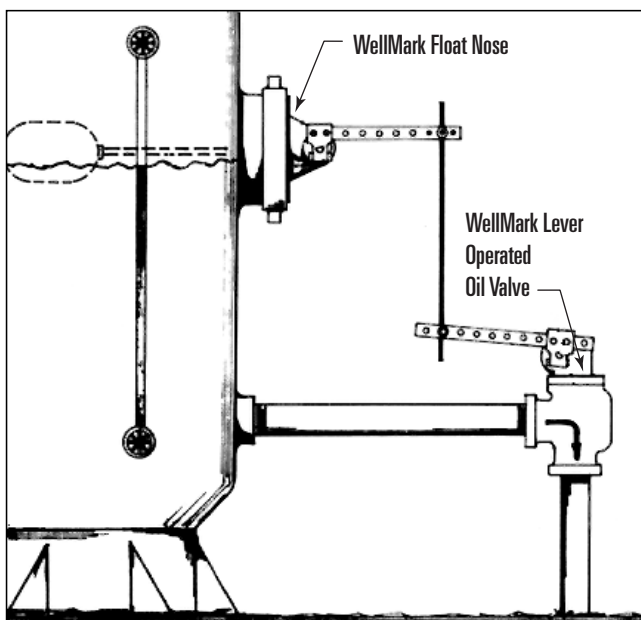
### Specifications

Max. Working Pressure ..... 500 psi

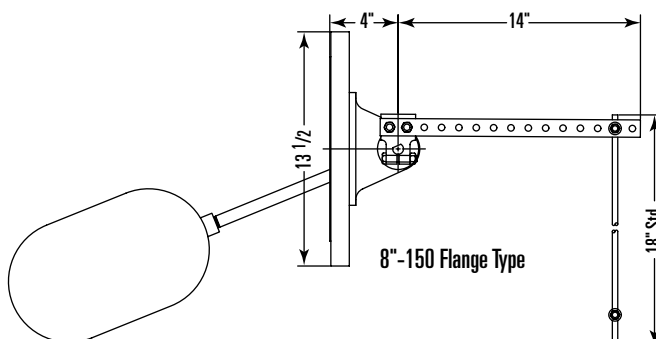
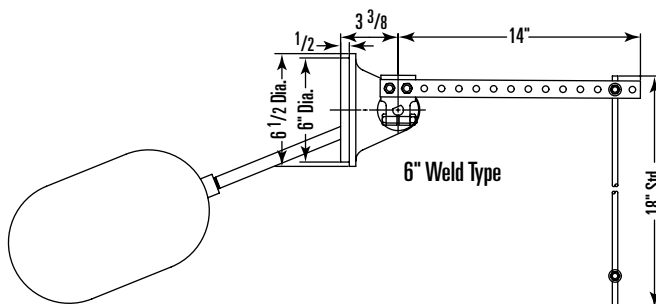
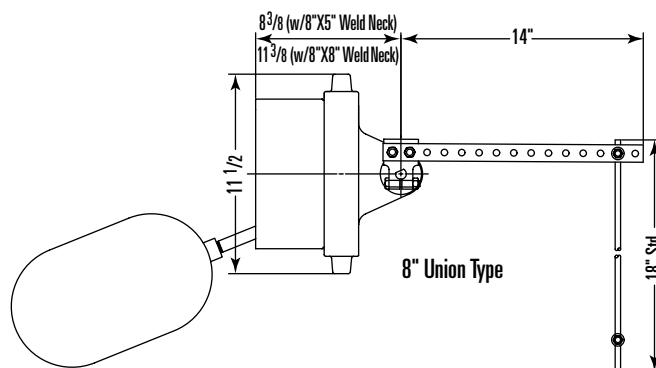
#### Materials

Float Nose .....	WCB Cast Steel
Hammer Union .....	WCB Cast Steel
Stuffing Box .....	Steel
Stem .....	303 S.S.
Float .....	7" x 12" Plated Steel (3/8" NPT Connection)
Weld Neck .....	Sch. 100 A106 GR. B Pipe

### Installation



### Dimensional Data



# 1850 Float Nose

## Determining the Model Number

Example given: Example given: Standard Model 8UN – 1850 Series 8" Union Type Float Nose.

### MODEL 8UN



**NOTE:** Weldneck, float, and float arm (specify length) are ordered separately.

## Parts List

Item	Description	Qty.	Part No.
1	FLOAT NOSE, 8" UNION, STEEL WCB	1	05010-9354
	FLOAT NOSE, 6" WELD, STEEL WCB	1	05010-9388
	FLOAT NOSE, 8"-150 FLANGE, STEEL	1	06500-4418
2*	HAMMER UNION, STEEL WCB	1	05013-3205
3*	O-RING, BUNA-N	1	05000-0710
4*	WELD NECK, 5" LG. STEEL	1	05013-3213
	WELD NECK, 8" LG. STEEL	1	05013-3221
5	STUFFING BOX, STEEL	1	05010-0817
6	BEARING, OILITE	1	06000-0007
7	RETAINER CUP, DELRIN	1	05010-0825
8	O-RING, BUNA-N	1	05000-0223
9	GASKET, DELRIN	1	05010-6715
10	HEX SCREW, STEEL PLATED	3	05000-1585
11	LEVER COLLAR, STEEL WCB	1	05010-0858
12	LEVER, STEEL	1	05010-3910
13	HEX CAP SCREW, STEEL PLATED	2	05000-1874
14	HEX CAP SCREW, STEEL PLATED	1	05000-1916
15	HEX NUT, STEEL PLATED	3	05000-2104
16	O-RING, BUNA-N	1	05000-0132
17	BALL JOINT, STEEL	2	06000-0619
18	ROD 18"LG., STEEL	1	05011-1053
19	WASHER, STEEL PLATED	2	06000-1054
20	HEX NUT, STEEL PLATED	2	05000-2435
21**	FLOAT ARM, STEEL	1	SPECIFY LENGTH
22	FLOAT, 500#, STEEL PLATED	1	06000-0163
23	STEM, 303 STAINLESS STEEL	1	05010-9362

\*8" Union Only

\*\*Float Arm Length 10" To 30"

